

# Maldives Land and Survey Authority,

## MINISTRY OF HOUSING AND INFRASTRUCTURE

Ameenee Magu, Maafannu, Male', 20392, Maldives.

Office (PABX): +(960) 3004300, Fax: +(960) 3004254

Email: survey@mhe.gov.mv

Web: www.surveyofmaldives.gov.mv, www.mhe.gov.mv



CONTROL POINT DETAILS		<b>Station Number</b> PSM0051
Coordinate Information		
Geodetic		Grid
WGS 84		UTM Zone 43
Lat: 4° 10' 48.57657" N		E: 328586.552 m
Long: 73° 27' 20.35985" E		N: 462209.941 m
Ellp Height: -94.069 m		Orth Height: 2.482 m
<b>Island Name:</b> K.Gulhifalhu		<b>Date:</b> 26 <sup>th</sup> January 2020

### Monument description & method of survey:

- Concrete cast in situ to a 0.3m radius cylinder, 0.9m in length. 1.5m rebar driven in the ground.
- Monument labeled with s/s plate stating the point Id "PSM0051"
- +0.1m above ground level
- GNSS static survey method
- Vertical datum corrected to MSL established by Maldives Metreological Services for Hulhule' tide gauge

### General site condition & access:

- Easy access
- Near small amount of vegetation
- Next to an open road
- Close to the beach

**Owner:** Royal Boskalis Westminster N.V.



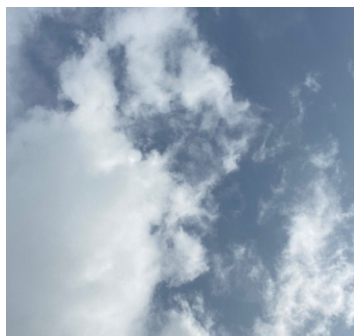
Bottom



North



East



Up



South



West

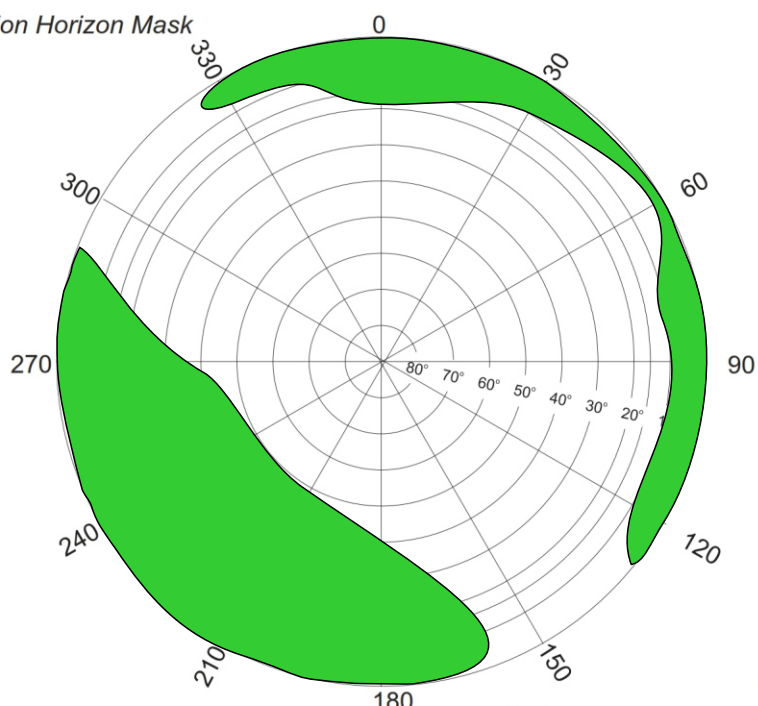


# SITE INFORMATION

Station Number

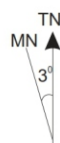
PSM 0051

Station Horizon Mask

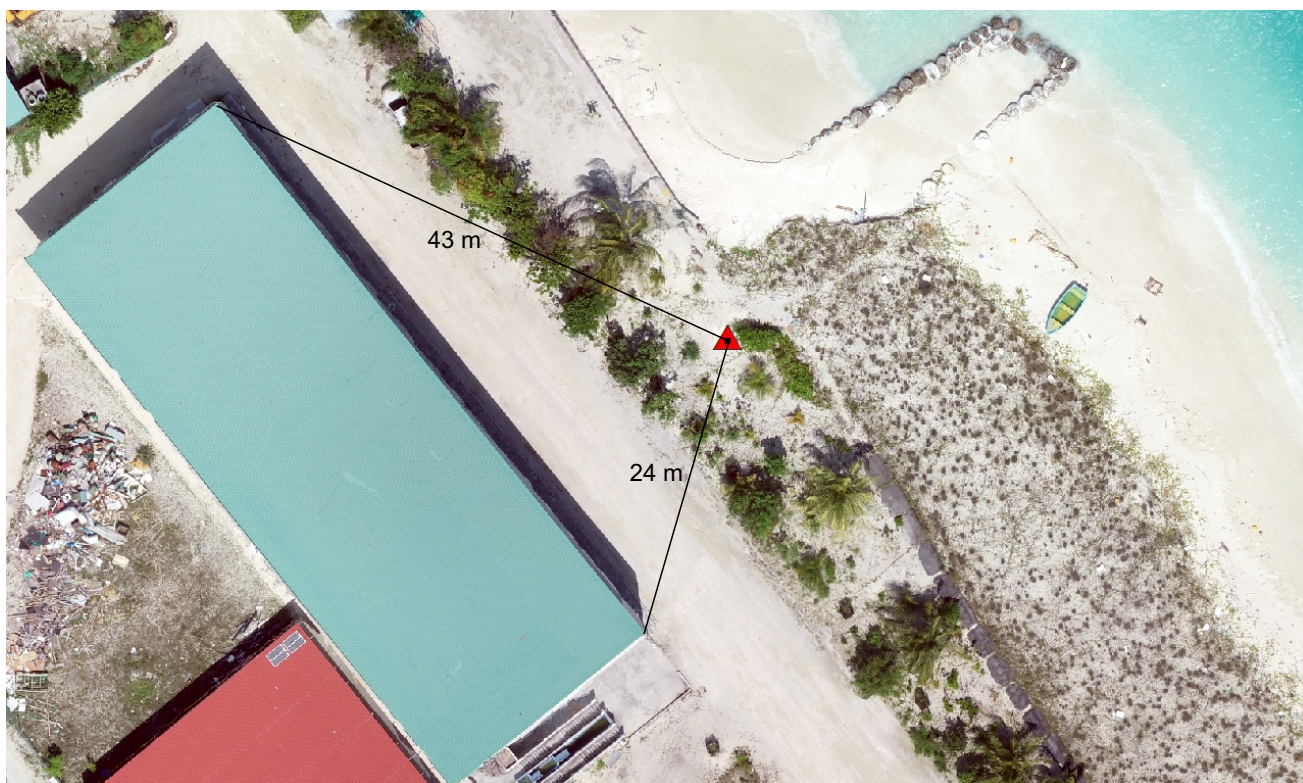
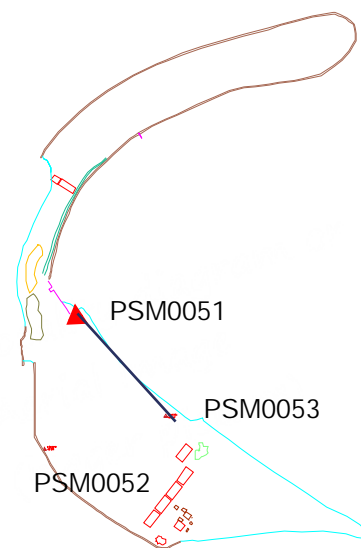


Height above Marker that horizon was mapped from 1.5 m

Magnetic Declination  
Declination applied to this figure?  
☐ Yes ☒ No



Locality



Sketched by: Faruhath Jameel

Scale: Not to scale

Date: 26<sup>th</sup> January 2020

# Maldives Land and Survey Authority,

## MINISTRY OF HOUSING AND INFRASTRUCTURE

Ameeney Magu, Maafannu, Male', 20392, Maldives.

Office (PABX): +(960) 3004300, Fax: +(960) 3004254

Email: survey@mhe.gov.mv

Web: www.surveyofmaldives.gov.mv, www.mhe.gov.mv



CONTROL POINT DETAILS		<b>Station Number</b> PSM0052
Coordinate Information		
Geodetic		Grid
WGS 84		UTM Zone 43
Lat: 4° 10' 39.65668" N	E: 328531.312 m	
Long: 73° 27' 18.58608" E	N: 461936.069 m	
Ellp Height: -94.005 m	Orth Height: 2.548 m	
<b>Island Name:</b> K.Gulhifalhu		<b>Date:</b> 26 <sup>th</sup> January 2020

### Monument description & method of survey:

- Concrete cast in situ to a 0.3m radius cylinder, 0.9m in length. 1.5m rebar driven in the ground.
- Monument labeled with s/s plate stating the point Id "PSM0052"
- +0.1m above ground level
- GNSS static survey method
- Vertical datum corrected to MSL established by Maldives Metreological Services for Hulhule' tide gauge

### General site condition & access:

- Easy access
- Near small shrubs and bushes
- Next to an open road
- Close to the Geo bags on the beach

**Owner:** Royal Boskalis Westminster N.V.



Bottom



North



East



Up



South



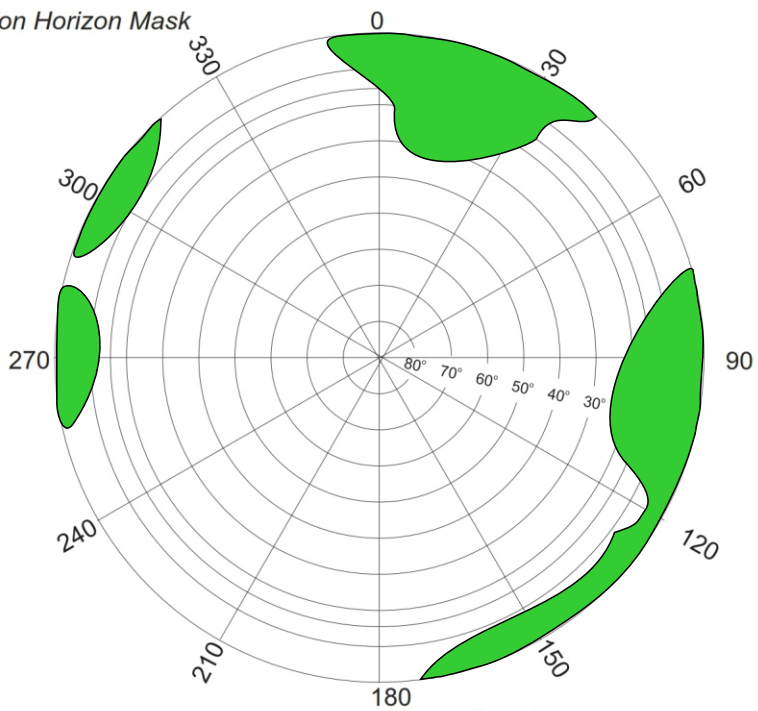
West



## SITE INFORMATION

Station Number

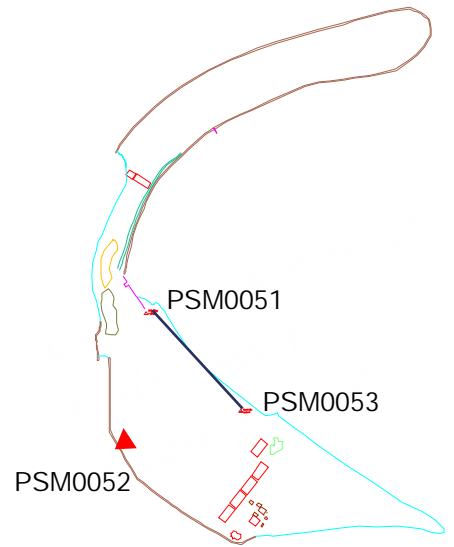
PSM 0052



Height above Marker that horizon  
was mapped from 1.5 m

Magnetic Declination .....  
Declination applied to this figure?  
☐ Yes ☒ No

### Locality



North

Sketched by: Faruhath Jameel

Scale: Not to scale

Date: 26<sup>th</sup> January 2020

**MALDIVES LAND AND SURVEY AUTHORITY**, MINISTRY OF HOUSING AND INFRASTRUCTURE, Ameenee Magu, Maafannu, Male', 20392, Maldives,  
Office (PABX): +(960) 3004300, Fax: +(960) 3004254, Email: [survey@mhe.gov.mv](mailto:survey@mhe.gov.mv), Web: [www.surveyofmaldives.gov.mv](http://www.surveyofmaldives.gov.mv), [www.mhe.gov.mv](http://www.mhe.gov.mv)



# Maldives Land and Survey Authority,

## MINISTRY OF HOUSING AND INFRASTRUCTURE

Ameenee Magu, Maafannu, Male', 20392, Maldives.

Office (PABX): +(960) 3004300, Fax: +(960) 3004254

Email: survey@mhe.gov.mv

Web: www.surveyofmaldives.gov.mv, www.mhe.gov.mv



CONTROL POINT DETAILS		<b>Station Number</b> PSM0053
Coordinate Information		
Geodetic		Grid
WGS 84		UTM Zone 43
Lat: 4° 10' 41.92161" N	E: 328785.538 m	
Long: 73° 27' 26.82522" E	N: 462005.139 m	
Ellp Height: -93.982 m	Orth Height: 2.577 m	
<b>Island Name:</b> K.Gulhifalhu		<b>Date:</b> 26 <sup>th</sup> January 2020

### Monument description & method of survey:

- Concrete cast in situ to a 0.3m radius cylinder, 0.9m in length. 1.5m rebar driven in the ground.
- Monument labeled with s/s plate stating the point Id "PSM0053"
- +0.1m above ground level
- GNSS static survey method
- Vertical datum corrected to MSL established by Maldives Metreological Services for Hulhule' tide gauge
- Datum Point

### General site condition & access:

- Easy access
- Near small shrubs and bushes
- Next to an open road
- Close to the Geo bags on the beach

**Owner:** Royal Boskalis Westminster N.V.



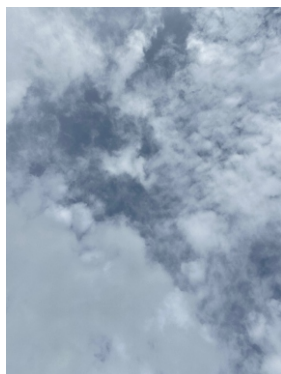
Bottom



North



East



Up



South



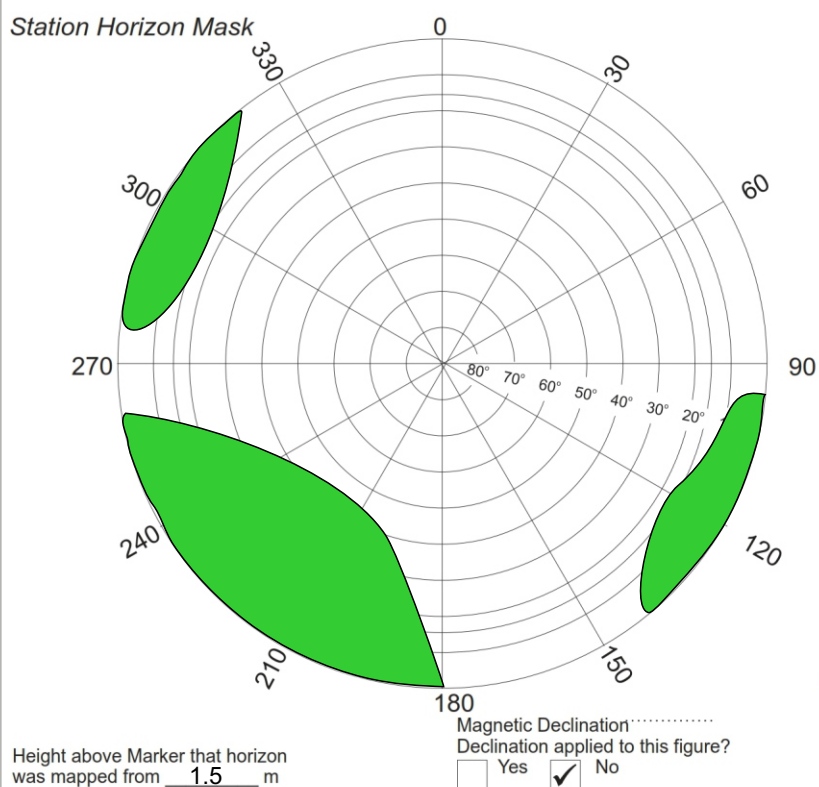
West

# SITE INFORMATION

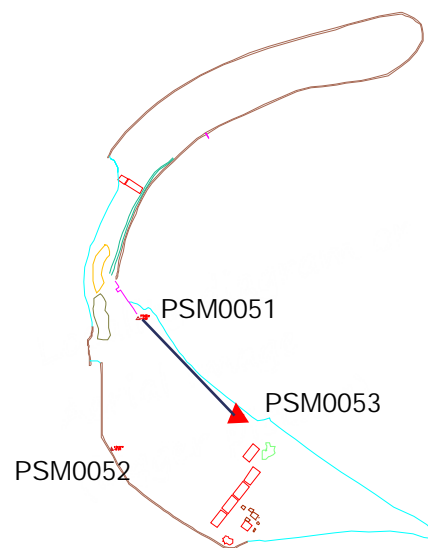
Station Number

PSM 0053

Station Horizon Mask



Locality



Sketched by: Faruhath Jameel

Scale: Not to scale

Date: 26<sup>th</sup> January 2020